

220 Le Verne St.

**Full Ownership Or Half Partnership
The Choice is Yours**



\$2,690,000

Coldwell Banker Mammoth Real Estate

Pristine Mountain Chalet, High Above the Town



This 3,000 square foot wood and stone chalet is situated in the exclusive Bluffs subdivision.

Built of cedar plank and Ransburg stone, the home backs up to National Forest Service land.

Light and bright throughout, with views to Mammoth Mountain, it is furnished entirely with new Stickley furniture designed in the early 1900's.

The house has four bedrooms, four baths, a gourmet kitchen with soapstone counters, sun-room, office, outdoor spa and a formal dining.

Punctuated with window seats, every view is

charming. Douglas fir doors, cabinets and trim, maple floors and exposed beams, add to the authentic mountain flavor. And there is a large two car garage with lots of room for storage in addition to a fabulous 2 space carport.



Hike or Cross Country Ski Right Out Your Back Door!

For More Information, Contact Bérénice de la Salle at (760) 937 5645

Enter a World where Serenity is

a Promise...



..that is Never Broken.



A Sanctuary, Inspired by the Best Mountain Homes ...



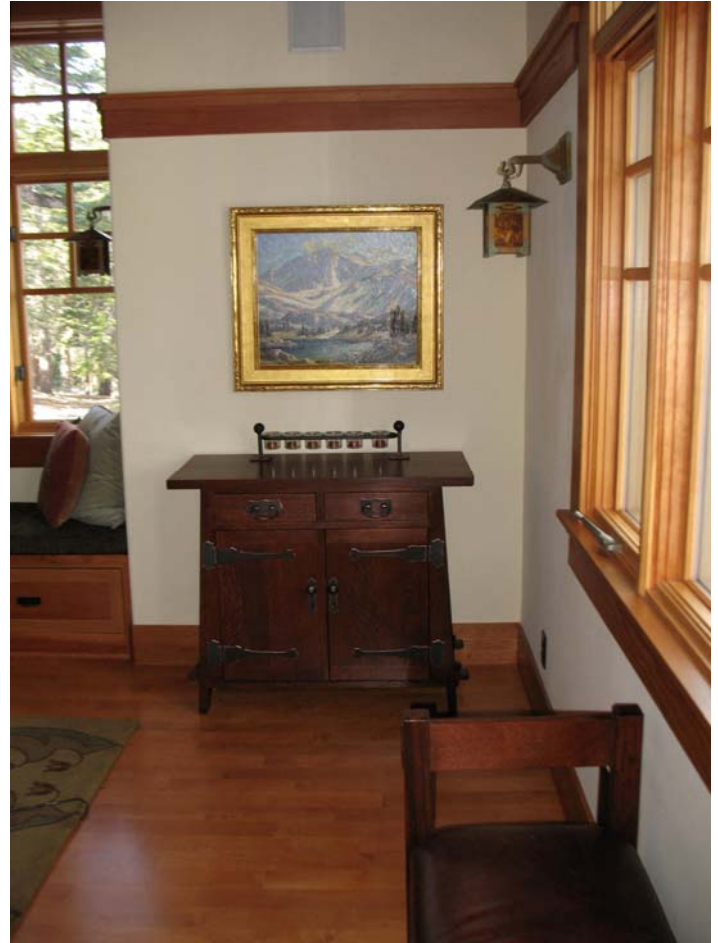
...from the Turn of the Last Century



where Everywhere You
Look...



...You Find Beauty in a Setting



...of Elegant Simplicity.



A House that Proves the Adage...



... that True Luxury

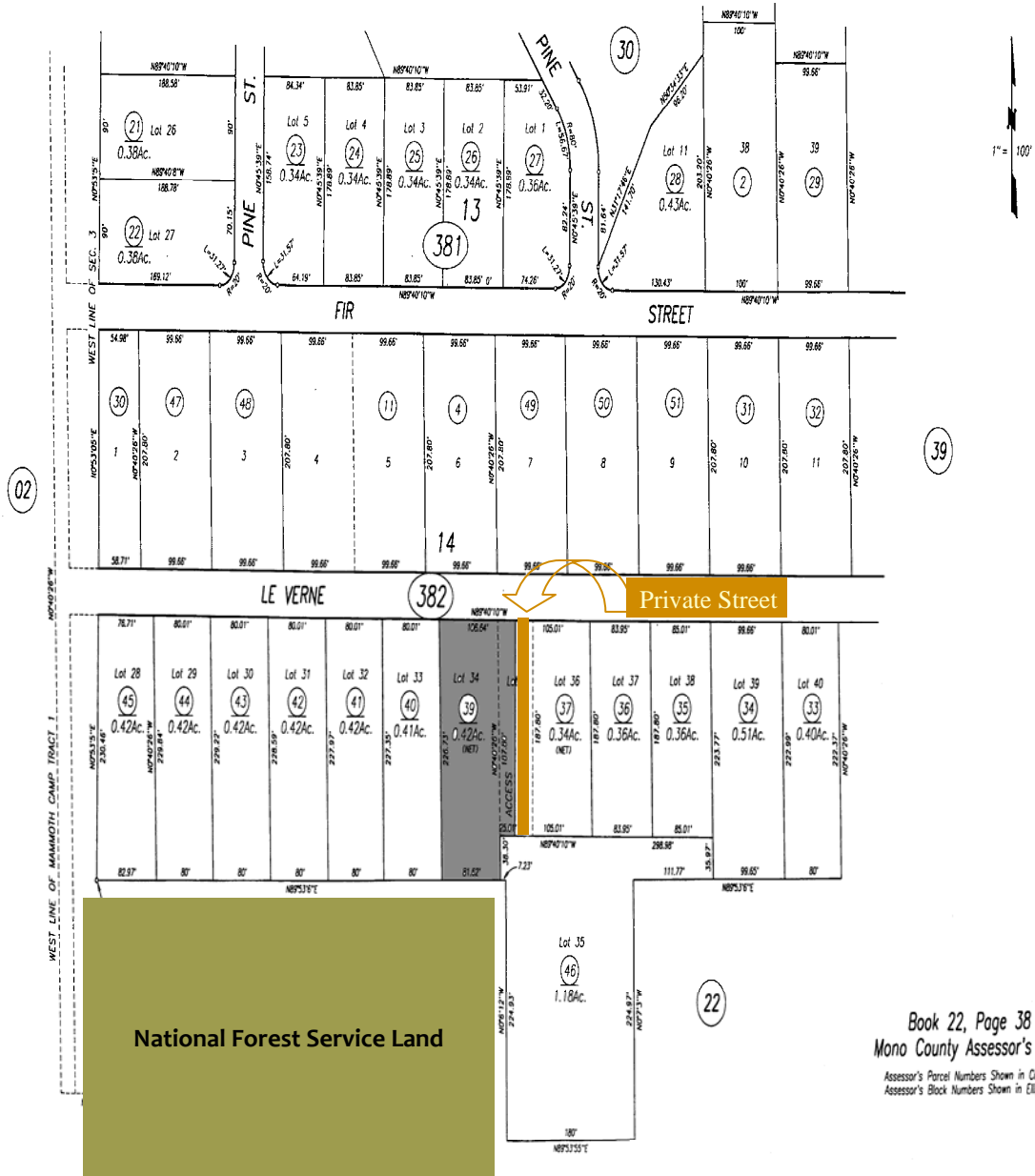


...is Never Ostentatious.



Lot 34 : .42 of an Acre.

22-38



Book 22, Page 38
Mono County Assessor's Map
Assessor's Parcel Numbers Shown in Circles.
Assessor's Block Numbers Shown in Ellipses.

For More Information, Contact Bérénice de la Salle at (760) 937 5645



For More Information, Contact



BERENICE DE LA SALLE

COLDWELL BANKER MAMMOTH REAL ESTATE

3293 Main Street
P.O. Box 1059
Mammoth Lakes, CA 93546
☎ (760) 934 9584
Cell (760) 937 5645
delasalleberen@aol.com

